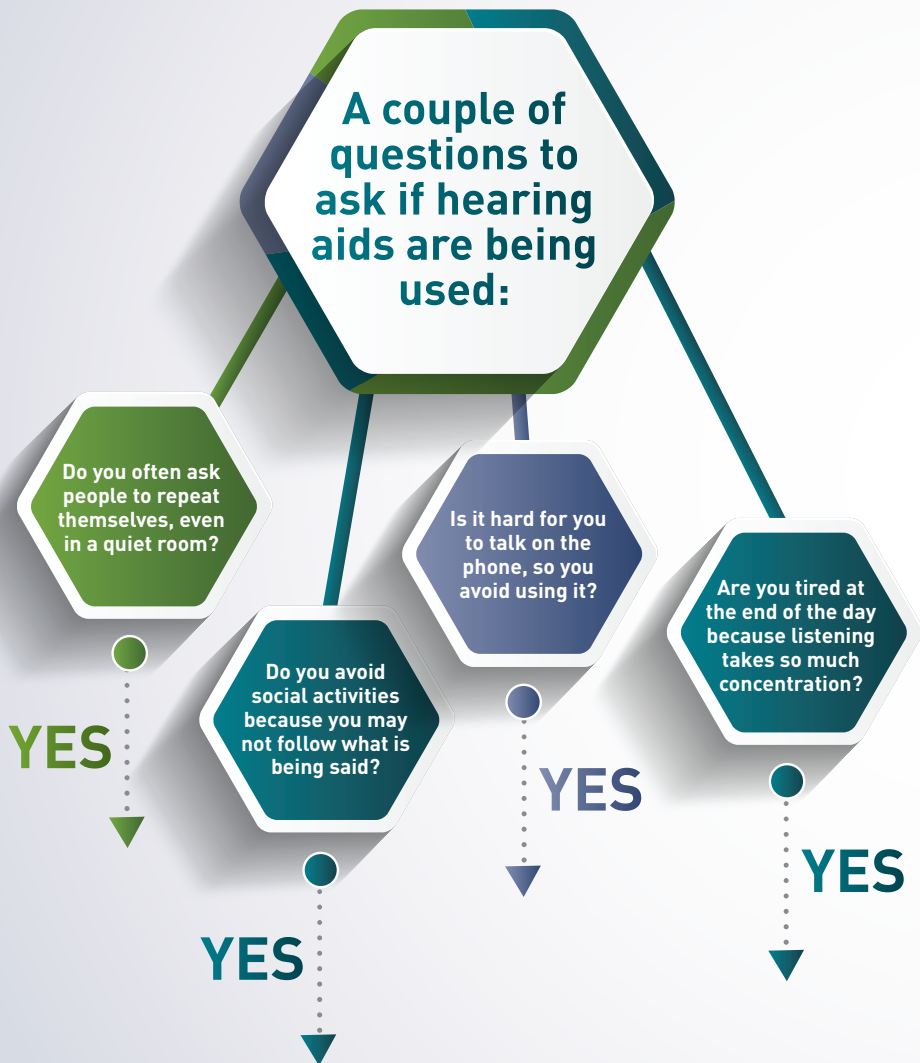
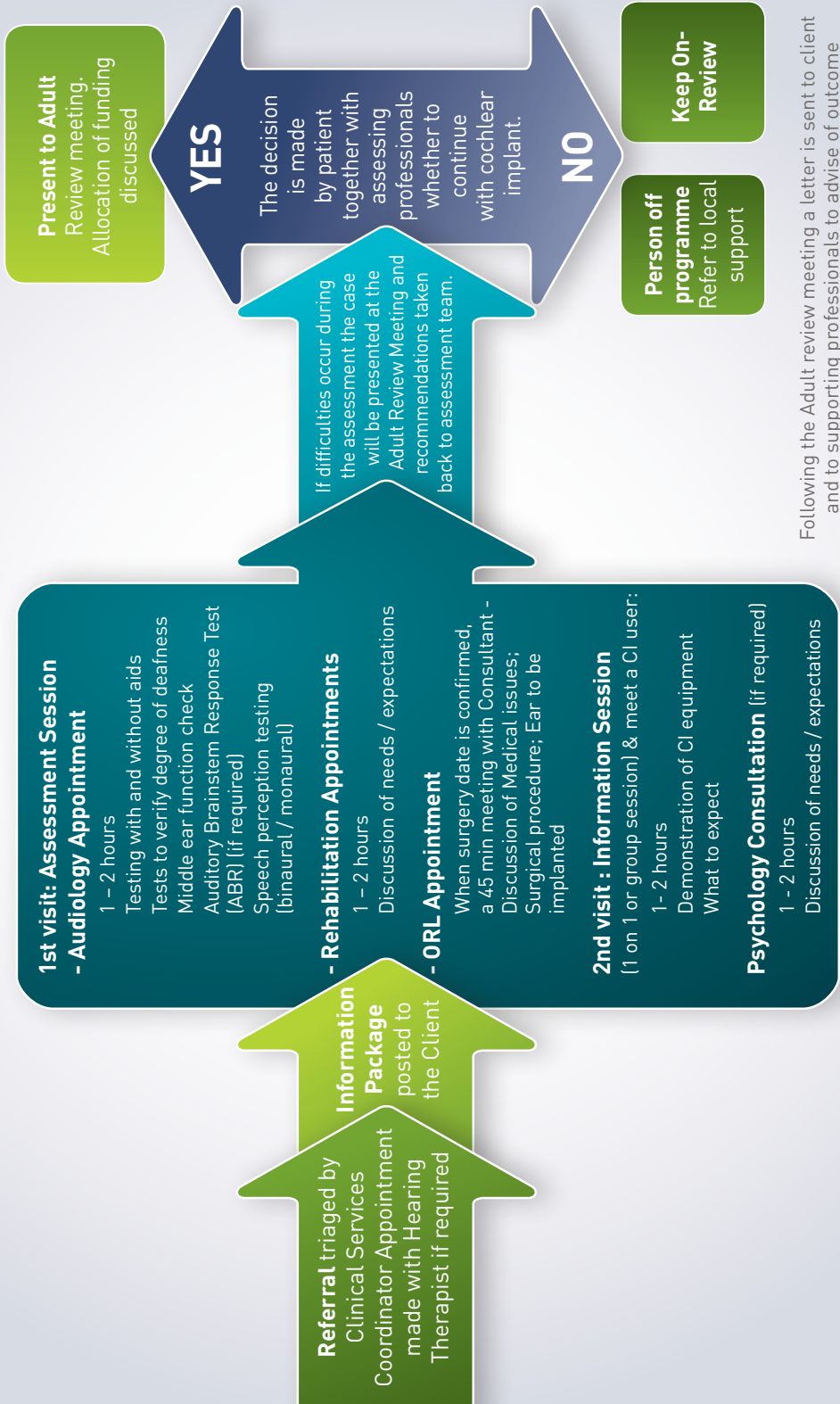


If you are a health professional or
an adult with hearing loss,
A COCHLEAR IMPLANT
may be the right hearing solution.



If the answer was **YES** to one or more of these questions, please refer to the Cochlear Implant Program. For information visit the Northern Cochlear Implant Programme at www.hearinghouse.co.nz or the Southern Cochlear Implant Programme at www.scip.co.nz

ASSESSMENT PROTOCOL FOR ADULTS



Following the Adult review meeting a letter is sent to client and to supporting professionals to advise of outcome